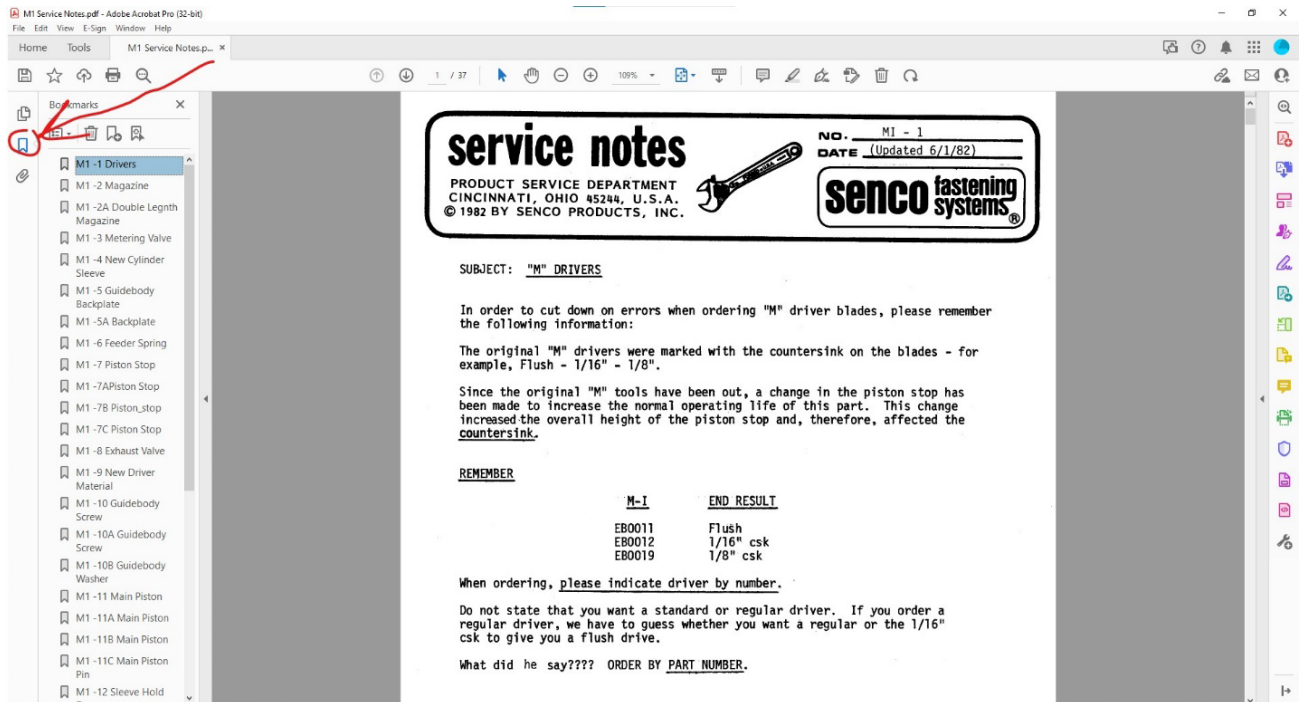


Service Notes Combined Document Instructions

In order to view / sort through all of the PDFs within this document in an effective manner please follow these step by step instructions.

After opening the file using Adobe Acrobat, you can easily sort through the included documents in this combined PDF by navigating to the left sidebar and selecting the "table of contents" or "bookmarks" sections; the name will depend on which version of Acrobat you are using. See the image below for reference.



From here, you can quickly find the necessary documentation included in this file based on the issue you are trying to address.

(Note: You will notice multiple service notes on the same part, depending on the tool that you are servicing. We advise you use the most up to date service note. This is indicated by an alphabetical designation after the part name.)

If you have any additional questions regarding your repair, please reach out to our technical support team via email at cstech@kyocera-senco.com



SENCO Repair Guide

FramePro 601 nailer

Symptom: **Inoperative**

Pull trigger nothing happens

1. Ensure proper air supply

Continuous leak at guide body

1. Change seals on cylinder sleeve BA0160

Tool stuck in fired position

1. Change and lubricate seals on firing valve assembly BA0159
-

Symptom: **Air leak, trigger not pulled**

At exhaust

1. Replace firing valve BA0159 seals
2. Check top of cylinder sleeve BA0160 for nicks
3. Replace seal between housing and cylinder sleeve BA0160
4. Replace cylinder sleeve BA0160
5. Replace firing valve BA0159

At trigger

1. Replace worn or missing seal on remote assembly CA0108

At milled slot at back of cap

1. Replace seals on top of trigger core
2. Replace trigger core or remote valve housing CA0108
3. Replace seals on remote valve housing CA0108

Between cap and casting

1. Tighten cap or cap screws
 2. Replace cap seal
 3. File top surface of housing if nicked
-

Symptom: **Air leak, trigger pulled**

At air exhaust

1. Replace exhaust valve
2. Replace firing valve assembly BA0159
3. Replace seals on firing valve BA0159

At guide body

1. Replace piston stop & clean tool

At trigger

1. Replace seals on trigger core CA0108

At milled slot at back of cap

1. Replace seals on firing valve BA0159 – ESPECIALLY THE LARGE O-RING ON THE SIDE OF THE MAIN FIRING VALVE – ring # LB1021 **(sometimes a slight stretch and greasing of the existing ring will correct the problem)**
 2. Replace seals on trigger core CA0108
-

Symptom: **Skipping**

1. See (poor return of driver or poor feed)
-

Symptom: **Poor return of driver**

1. Check air pressure
 2. Lubricate tool
 3. Check main piston/driver EA0164 seal
 4. Replace cylinder sleeve BA0160 seals
 5. Check for worn or broken firing valve / seals BA0159
 6. Replace swollen or damaged piston stop BB0148
-

Symptom: **Poor feed**

1. Check feeder spring GC1015 for dirt, kinks or breakage
 2. Check for broken or burrs on feeder shoe GA0463
 3. Remove dirt / foreign matter from magazine GA0464
 4. Check for poor return of driver
 5. Check fasteners
 6. Check upper magazine rail for pinching of fasteners
-

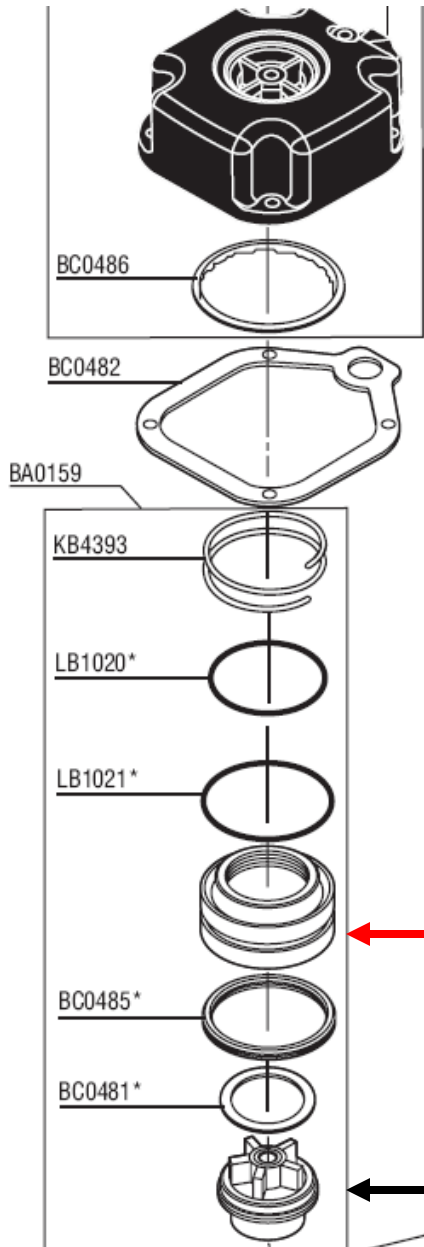
Symptom: **Jamming**

1. See poor feed
 2. Check for proper air pressure
 3. Check fasteners to make sure they slide freely in magazine
 4. Check magazine track for tightness
 5. Check fastener stop in / on guide body
 6. Check for burrs on driver
-

=====

RFS 2007

If your FramePro 601 or 602 leaks from the rear of the cap when trigger is pulled:



Symptom: Air leak, trigger pulled

(FramePro 601 or 602)

At air exhaust

1. Replace exhaust valve
2. Replace firing valve assembly
3. Replace seals on firing valve

At guide body

1. Replace piston stop & clean tool

At trigger

1. Replace seals on trigger core

At milled slot at back of cap

1. Replace seals on firing valve – ESPECIALLY THE LARGE O-RING ON THE SIDE OF THE MAIN FIRING VALVE – ring # LB1021 (sometimes a slight stretch and greasing of the existing ring will correct the problem)

2. Replace seals on trigger core SENCO0051

FYI – to disassemble the cap contents, push the retainer side to side with a flathead screwdriver to free it from its seated position. To install, push it firmly into the top cap until you feel that it snaps into place.

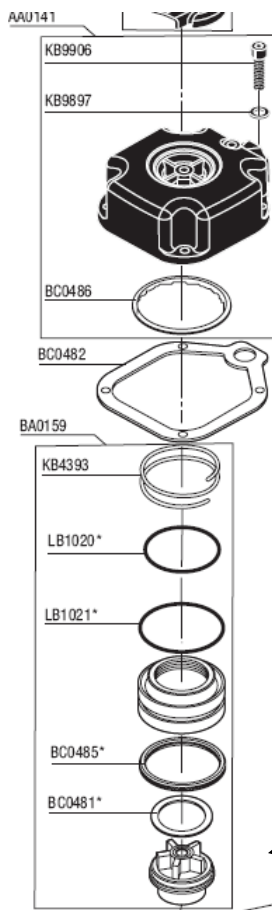
SENCO - Frequently Asked Questions

Q: I need to service my FramePro 601 (or 602). How do I remove the parts from the top cap?

A: The bottom part (retainer/bumper) serves to secure the other parts up into the cap. To remove the parts, you need to “pop-out” the retainer/bumper. It is a hard rubber with rounded profile hooks on the side. Up in the cap there is a “recess” that accepts the hooks. The part is able to “pop-in” and “pop-out”.

Two ways to remove the bottom part:

- 1) remove the exhaust deflector and push a shaft or screwdriver through the top to force the bottom part out.
- 2) Use a flathead screwdriver to “rock” the bottom part from side-to-side – the part will work loose and free itself from the gripping recess.



To return the parts into the top cap:

- 1) be sure all o-rings and springs are in proper position
- 2) be sure to apply grease or oil to the parts
- 3) lay the parts down into the cap and give the retainer/bumper a good push to allow it the “snap” into position – *or, a good smack with a rubber mallet if you prefer*

This is the **bottom part (retainer/bumper)** that holds all of the other parts up and inside the top cap. Be sure it secures into the cap so it stays in place.



(five spokes go up into top cap)

SENCO - Frequently Asked Questions

JAM CLEARING - FramePro601, 651, and 602

Q: How do you clear jammed nails from the FramePro 601 and FramePro 602 nailers?

A: FramePro 601 and 602 - jam removal procedure:

Loosen and remove the screws at the rear of the magazine that hold the magazine bracket to the handle, then slide the magazine back and away from the nose of the tool.

Now, it may be necessary to force the driver back up into the body of the tool to remove your jammed nail, First position the tool so it's up-side-down, then strike the driver with a screwdriver and small hammer to force the driver (it's hardened steel) down into the body. At some point, the jammed nail will become free so you can discard.

Re-assemble parts and you're done. Spray the magazine with some dry-film lubricant, like silicon spray, to minimize jamming.

=====
RFS 2003

SERVICE NOTES

NO.: FramePro - 8

DATE OF ISSUE: January 2003

DATE OF CHANGE: January 2003

TECHNICAL PUBLICATIONS
CINCINNATI, OHIO 45244, U.S.A.
© 2003 BY SENCO PRODUCTS, INC.



Subject: Restrictive Trigger Replacement

Users of FramePro tools with restrictive (single-sequential, single shot) trigger assemblies are urged to call for an upgrade to their restrictive trigger assemblies. Simply call toll-free (1-800-543-8273) to request a new (free) restrictive trigger assembly. Be prepared to provide the model number, serial number or date of purchase to insure the proper trigger for your tool is provided. Triggers are provided at no charge.



SENC0071

FramePro 601
FramePro 651
FramePro 602
FramePro 652



HA0098

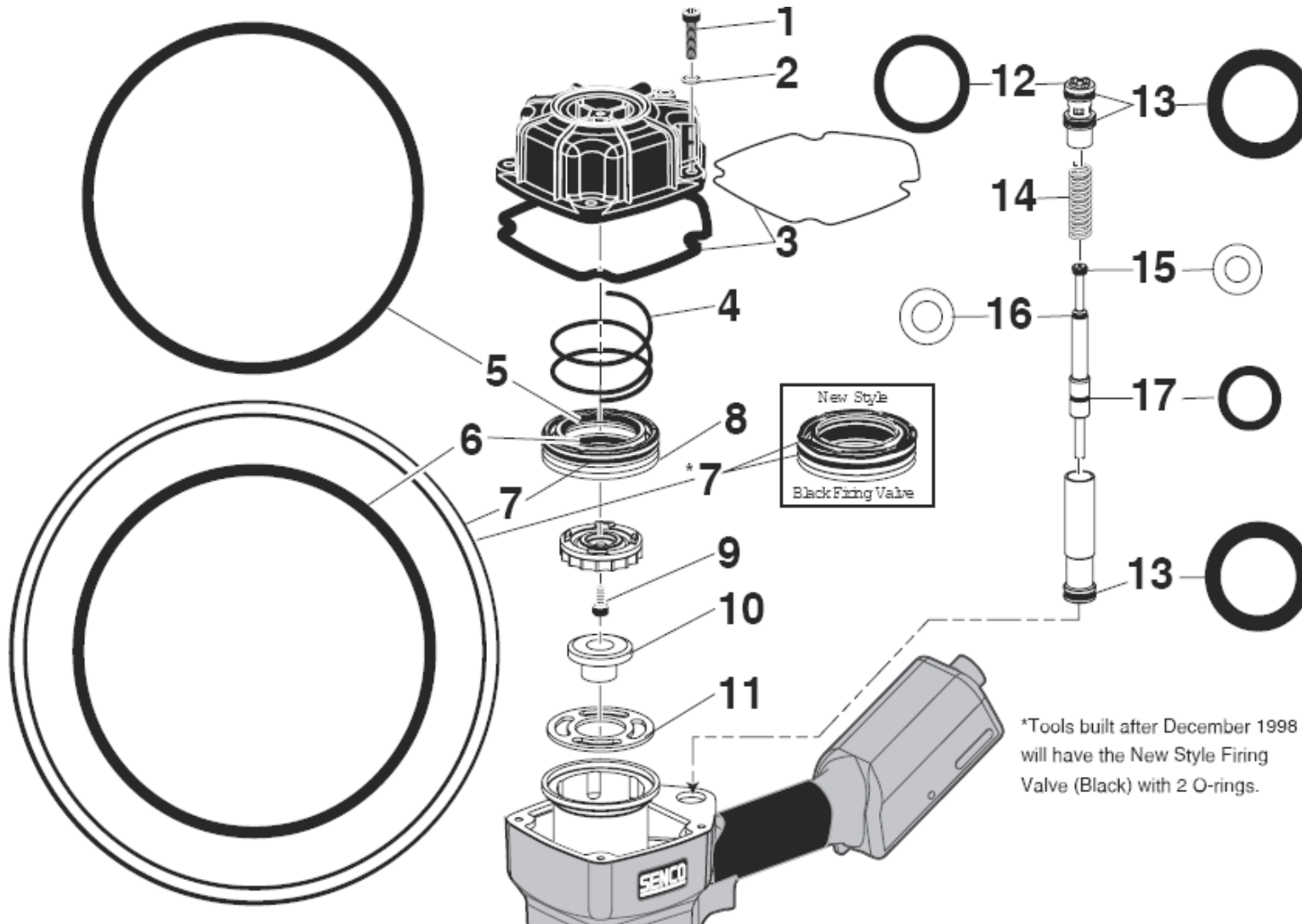
FramePro 600
FramePro 650
FramePro 600 FRH
FramePro 650 FRH
FramePro 700XL
FramePro 750XL
FramePro 700XL- FRH
FramePro 750XL- FRH



HA0129

FramePro 701XP
FramePro 751XP
FramePro 702XP
FramePro 752XP

PART NUMBERS

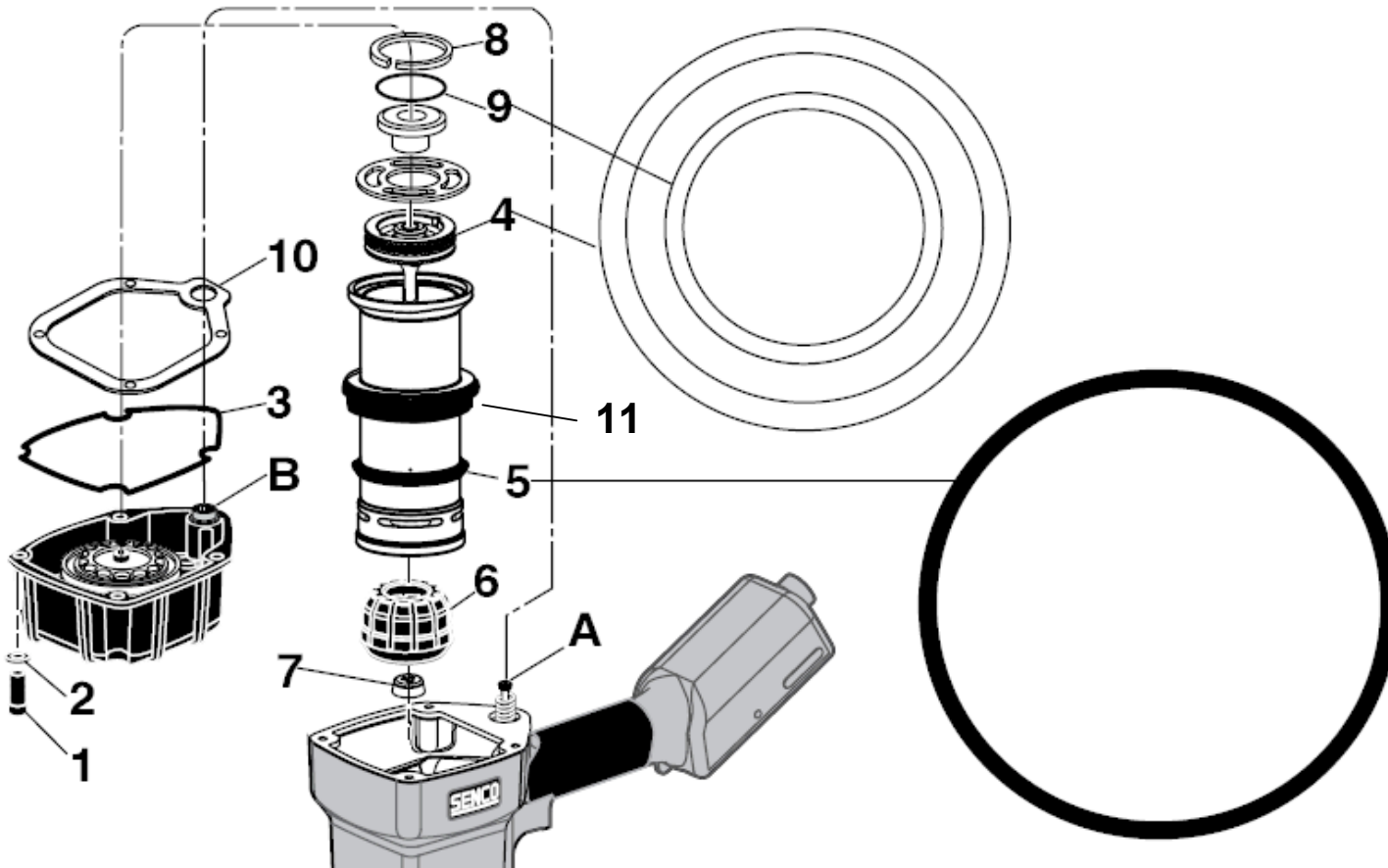


- 1 – KB3255 (4)
- 2 – KB9752 (4)
- 3 – AC0141 (R)
- 3 – AC0251 (L)
- 4 – KB4268
- 5 – LB0768
- 6 – LB0038
- 7 – LB3505 (2)
- 8 – BF0203
- 9 – KB9773
- 10 – BF0204
- 11 – BC0309
- 12 – LB0018
- 13 – LB0057 (3)
- 14 – KB4177
- 15 – LB0844
- 16 – LB0847
- 17 – LB0902

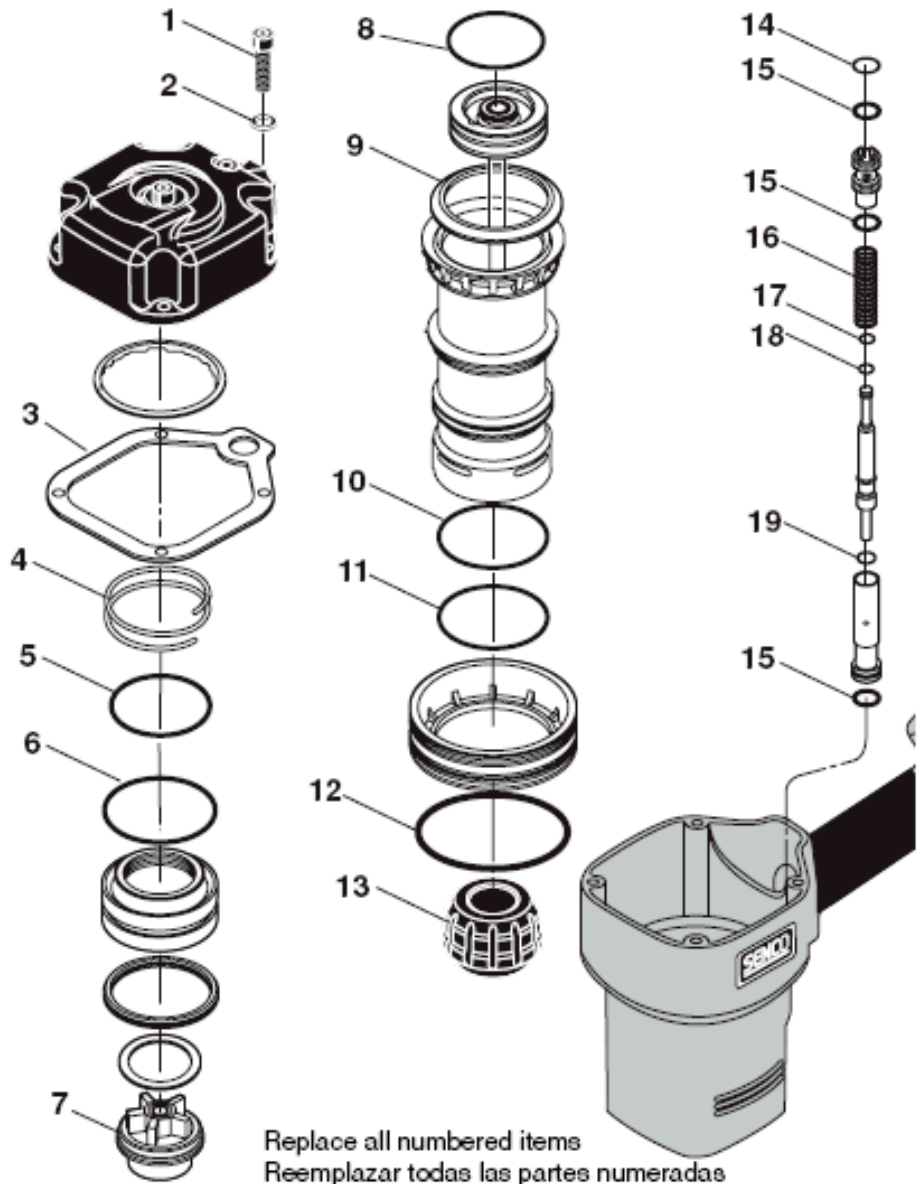
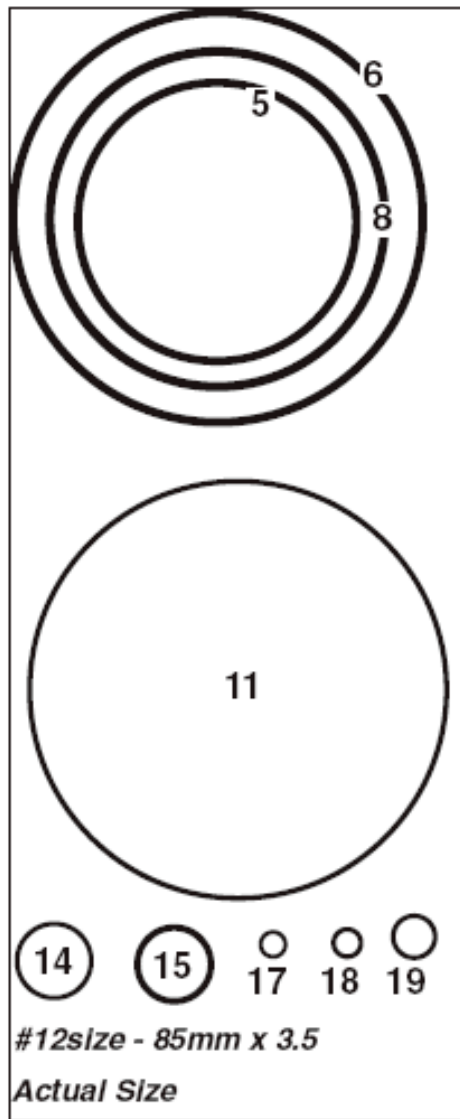
KIT # YK0243 – upper kit for FramePro nailers

PART
NUMBERS

- 1 – KB3255 (4)
- 2 – KB9752 (4)
- 3 – AC0141
- 4 – LB0850
- 5 – LB0086
- 6 – BB0148
- 7 – BF0247
- 8 – LB0901 and
LB0906
- 9 – LB0036
- 10 – AA0115
- 11 – LB0886



KIT # YK0244 – lower kit for FramePro nailers



Replace all numbered items
 Reemplazar todas las partes numeradas
 Ersetzen Sie alle nummerierten Teile
 Remplacer toutes les pièces numérotées

PART NUMBERS

- 1 – KB9906 (4)
- 2 – KB9897 (4)
- 3 – BC0482
- 4 – KB4393
- 5 – LB1020
- 6 – LB1021
- 7 – INC W/ BA0159
- 8 – LB1017
- 9 – BC0483
- 10 – LB1016
- 11 – LB1015
- 12 – LB1018
- 13 – BB0148
- 14 – LB1012
- 15 – LB1013 (3)
- 16 – INC W/ CA0108
- 17 – LB1014
- 18 – LB1011
- 19 – LB1010

KIT # YK0360 – repair kit for FramePro 601, 602, 651, 652 nailers